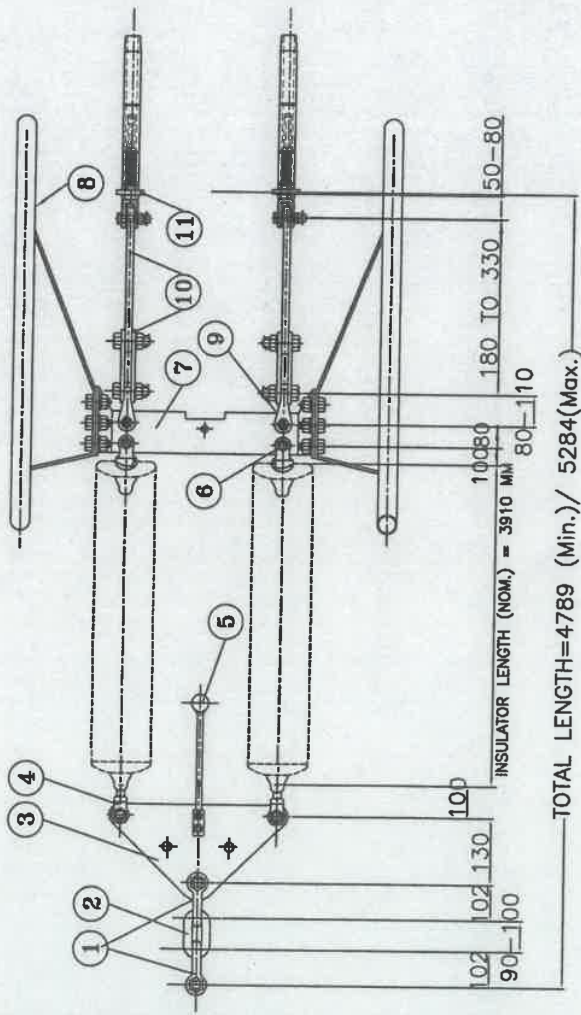


**TECHNICAL DETAILS:**

- 1) ALL DIMENSIONS ARE IN mm.
- 2) GENERAL TOLERANCES : ±3%.
- 3) ALL FERROUS PARTS HOT DIP GALVANISED & SPRING WASHER ELECTRO GALVANISED AS PER POWERGRID SPECIFICATION.
- 4) ALL DIMENSIONS ARE AFTER GALVANISATION EXCEPT DRILLED HOLES.
- 5) HARDWARE TOLERANCES ON LENGTH ±2%.



**POWER GRID CORPORATION OF INDIA LIMITED**  
(A GOVERNMENT OF INDIA ENTERPRISE)



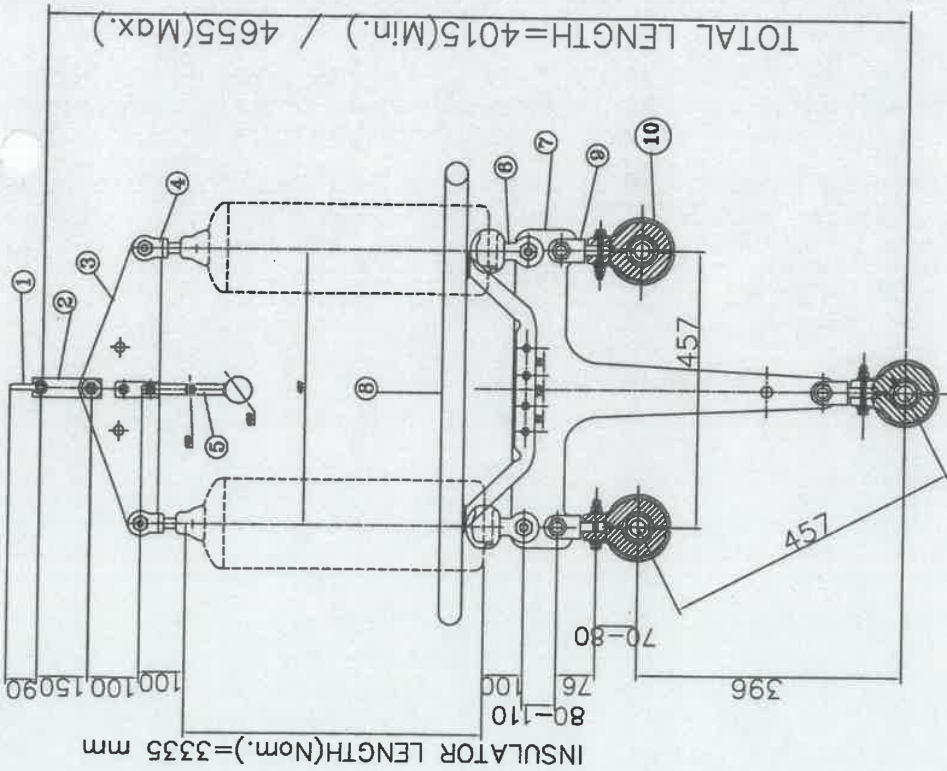
**TITLE:- 400 KV DOUBLE TENSION INSULATOR STRING FOR TWIN MOOSE ACSR CONDUCTOR, UTS-320 KN**

**CLEARED BY**

<i>[Signature]</i> SR. GM (ENGG-TL)	<i>[Signature]</i> CGM (ENGG-TL)	<i>[Signature]</i> ED (ENGG)
19-11-19	21-11-19	<i>[Signature]</i> GM (ENGG-TL)
DATE	MGR. (ENGG-TL)	DATE

**DRG. NO.:- CC:ENGG:TL/HW/400 KV/TWIN/DT**

Sr. No.	DESCRIPTION	PART NO.	UTS	QTY.	REF	DRG: CC: ENGG: TL/HW
11	COMPRESSION DEADEND	CDE-MOOSE	----	2	CDE-002	
10	SAG ADJUSTABLE PLATE	SAP-160-01	160 KN	2 SET	SAP-001	
9	CLEVIS EYE	CE-160-01	160 KN	2	CE-001	
8	CORONA RING	CR-400-03A	----	2	CR-001	
7	YOKE PLATE	YP-RT-320-03	320 KN	1	YP-RT-001	
6	SOCKET CLEVIS	SC-175-01	175 KN	2	SC-001	
5	ARCING HORN (BALL)	AH-BL-02C	----	1	AHB-001	
4	BALL CLEVIS	BC-175-01A/ BC-175-01B	175 KN	2	BC-001	
3	YOKE PLATE	YP-TR-350-02	350 KN	1	YP-TR-001	
2	CHAIN LINK	CL-320-01	320 KN	1	CL-001	
1	ANCHOR SHACKLE	AS-350-02	350 KN	2	AS-001	



INSULATOR LENGTH(Nom.)=335 mm

TOTAL LENGTH=4015(Min.) / 4655(Max.)

**TECHNICAL TAILS:**

- 1) ALL DIMENSIONS ARE IN mm.
- 2) GENERAL TOLERANCES : ±3%.
- 3) ALL FERROUS PARTS HOT DIP GALVANISED & SPRING WASHER ELECTRO GALVANISED AS PER POWERGRID SPECIFICATION.
- 4) ALL DIMENSIONS ARE AFTER GALVANISATION EXCEPT DRILLED HOLES.
- 5) HARDWARE TOLERANCES ON LENGTH ±2%.

**POWER GRID CORPORATION  
OF INDIA LIMITED**  
(A GOVERNMENT OF INDIA ENTERPRISE)



**TITLE:- 400 KV DOUBLE "I" SUSPENSION INSULATOR  
STRING FOR TRIPLE ACSR "SNOWBIRD" CONDUCTOR.**

**UTS-240 KN**

**CLEARED BY**

SR. GM  
(ENGG-TL)

CGM  
(ENGG-TL)

MGR.  
(ENGG-TL)

CH. MGR.  
(ENGG-TL)

ED  
(ENGG)

GM  
(ENGG-TL)

DATE  
14.11.19

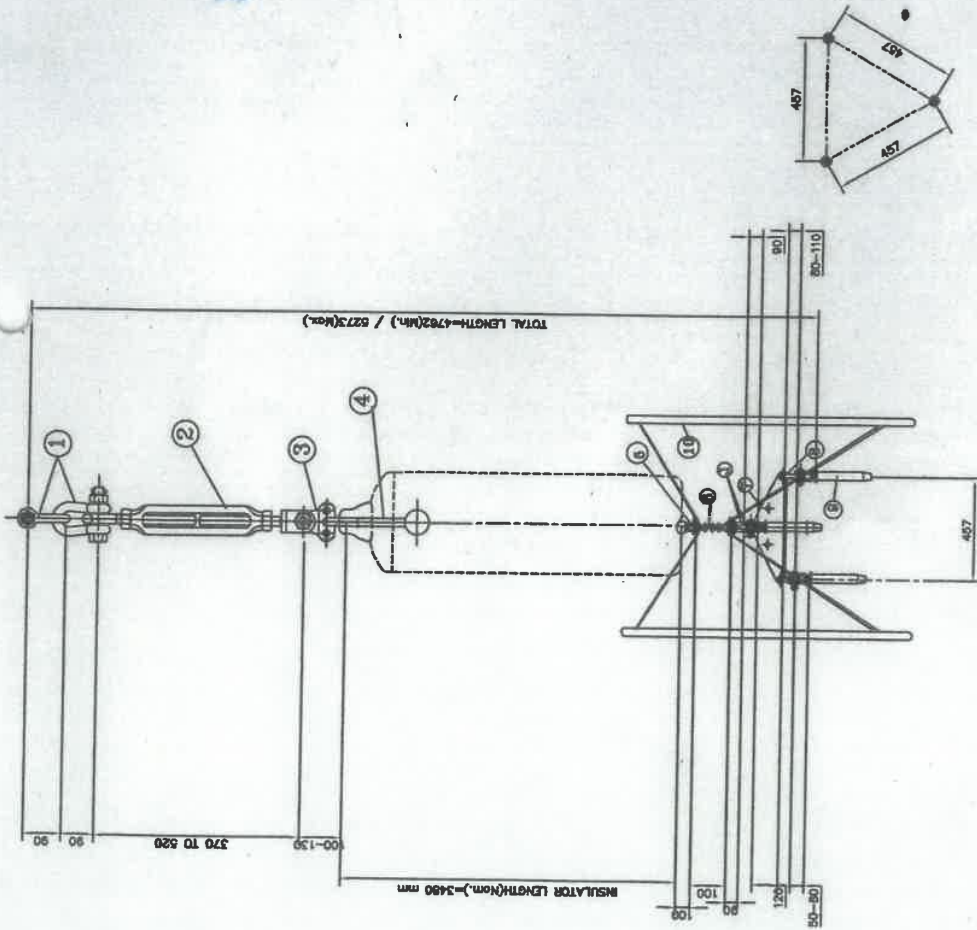
**DRG. NO. :- CC:ENGG:TL/HW/400 KV/TRIPLE/DIS**

Sr. No.	DESCRIPTION	PART NO.	UTS	QTY.	REF	DRG.	CC:ENGG:TL/HW
10	SUSPENSION CLAMP(A.G.S)	ACS-SNOWBIRD	70 KN	3			ACS-001
9	CLEVIS EYE	CE-90-01	90 KN	3			CE-001
8	CORONA RING	CR-400-02	----	1			CR-001
7	YOKE PLATE	YP-C-T-240-01	240 KN	1			YP-C-T-001
6	SOCKET CLEVIS	SC-120-01	120 KN	2			SC-001
5	ARCING HORN (BALL)	AH-BL-02B	----	2			AHB-001
4	BALL CLEVIS	BC-120-01	120 KN	2			BC-001
3	YOKE PLATE	YP-TR-240-02A	240 KN	1			YP-TR-001
2	Y-STRAP	YS-240-01	240 KN	1			YS-001
1	ANCHOR SHACKLE	AS-240-01	240 KN	1			AS-001

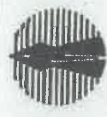


**TECHNICAL DETAILS:**

- 1) ALL DIMENSIONS ARE IN mm.
- 2) GENERAL TOLERANCES : ±3%.
- 3) ALL FERROUS PARTS HOT DIP GALVANISED & SPRING WASHER ELECTRO GALVANISED AS PER POWERGRID SPECIFICATION.
- 4) ALL DIMENSIONS ARE AFTER GALVANISATION EXCEPT DRILLED HOLES.
- 5) HARDWARE TOLERANCES ON LENGTH ±2%.
- 6) CLEVIS EYE NOT REQUIRED IF DEAD END ASSEMBLY INCLUDES ANCHOR SHACKLE



**POWER GRID CORPORATION  
OF INDIA LIMITED**  
(A GOVERNMENT OF INDIA ENTERPRISE)



**TITLE:- 400 KV SINGLE TENSION INSULATOR STRING  
FOR TRIPLE ACSR "SNOWBIRD" CONDUCTOR.  
UTS-120 KN**

**CLEARED BY**

Signature: *[Handwritten Signature]*  
Signature: *[Handwritten Signature]*  
Signature: *[Handwritten Signature]*  
Signature: *[Handwritten Signature]*

SR. GM (ENGG-TL)      MGR (ENGG-TL)      SH. MGR (ENGG-TL)      ED (ENGG)

CGM (ENGG-TL)

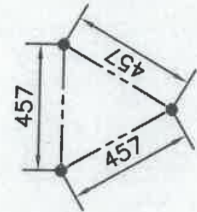
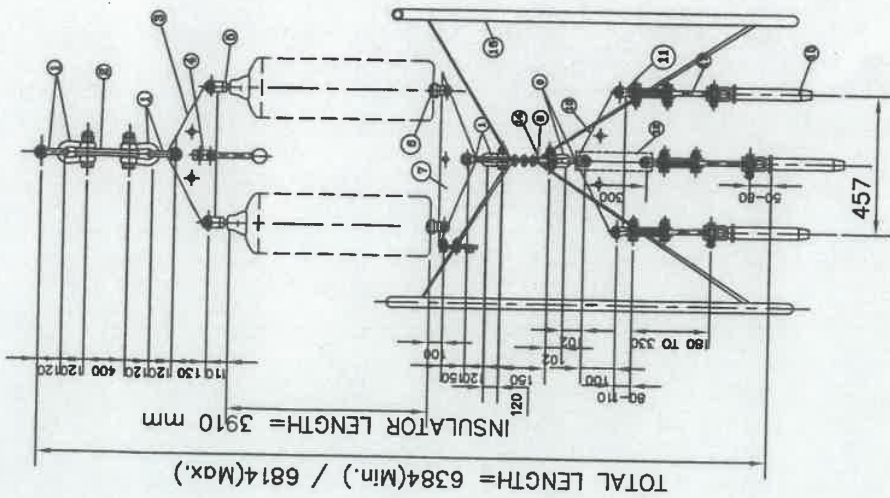
DATE: 14.11.19

**DRG. NO. :- CC:ENGG:TL/HW/400 KV/TRIPLE/ST**

Sr. No.	DESCRIPTION	PART NO.	UTS	QTY.	REF
10	CORONA RING	CR-400-03D	---	2	CR-002
9	COMPRESSION DEADEND	CDE-SNOWBIRD	112.2 KN(Mm)	3	CDE-001
8	CLEVIS EYE	CE-160-01	160 KN	3	CE-001
7	YOKE PLATE	YP-TR-80-01	80 KN	1	YP-TR-001
6	YOKE PLATE	YP-TR-120-08	120 KN	1	YP-TR-001
5	SOCKET CLEWS	SC-120-01	120 KN	1	SC-001
4	ARCING HORN (BALL)	AH-BL-03B	---	1	AHB-001
3	BALL EYE (HORN HOLDER)	BE-120-01	120 KN	1	BE-001
2	TURN BUCKLE	TB-120-01	120 KN	1	TB-001
1	ANCHOR SHACKLE	AS-120-01	120 KN	6	AS-001
	DESCRIPTION	PART NO.	UTS	QTY.	REF
					DRG: CC:ENGG:TL/HW

**TECHNICAL DETAILS:**

- 1) ALL DIMENSIONS ARE IN mm.
- 2) GENERAL TOLERANCES :  $\pm 3\%$ .
- 3) ALL FERROUS PARTS HOT DIP GALVANISED & SPRING WASHER ELECTRO GALVANISED AS PER POWERGRID SPECIFICATION.
- 4) ALL DIMENSIONS ARE AFTER GALVANISATION EXCEPT DRILLED HOLES.
- 5) HARDWARE TOLERANCES ON LENGTH  $\pm 2\%$ .



Sr. No.	DESCRIPTION	PART NO.	UTS	QTY.	REF
16	CORONA RING	CR-400-04B	---	2	CR-002
15	COMPRN. DEADEND	CODE-SNOWBIRD	1122 max.	3	CD-001
14	ANCHOR SHACKLE	AS-180-01	180 KN	2	AS-001
13	SAG ADJUSTABLE PLATE	SAP-160-01	160 KN	3	SAP-001
12	EXTENSION LINK	EL-160-01	160 KN	1	EL-001
11	CLEVIS EYE	CE-160-01	160 KN.	3	CE-001
10	YOKE PLATE	YP-TR-280-01	280 KN	1	YP-TR-001
9	ANCHOR SHACKLE	AS-350-02	350 KN	2	AS-001
8	YOKE PLATE	YP-TR-470-07	470 KN	1	YP-TR-001
7	YOKE PLATE	YP-TR-420-01	420 KN	1	YP-TR-001
6	SOCKET CLEVIS	SC-235-01	235 KN	2	SC-001
5	BALL CLEVIS	BC-235-01A	235 KN	2	BC-001
4	ARROW HORN (BALL)	AH-BL-02C	---	2	AHB-001
3	YOKE PLATE	YP-TR-470-02	470 KN	1	YP-TR-001
2	EXTENSION LINK	EL-420-01	420 KN	1	EL-001
1	ANCHOR SHACKLE	AS-470-01	470 KN	6	AS-001

**POWER GRID CORPORATION OF INDIA LIMITED**  
(A GOVERNMENT OF INDIA ENTERPRISE)



**TITLE:- 400 KV. DOUBLE TENSION INSULATOR STRING FOR TRIPLE ACSR "SNOWBIRD" CONDUCTOR. UTS-420 KN**

**CLEARED BY**

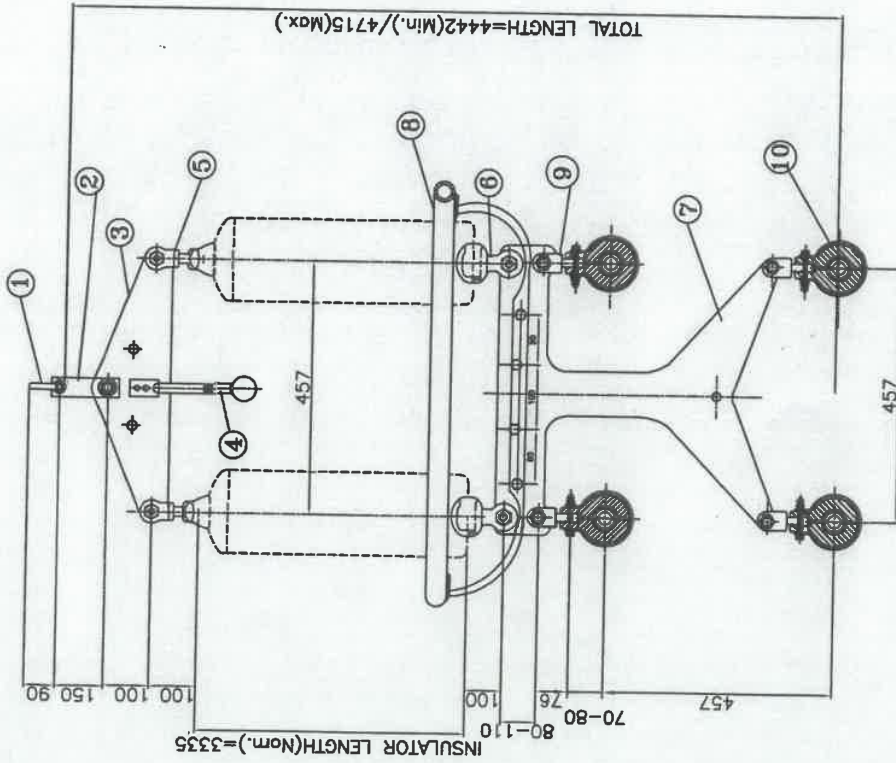
SR. GM (ENGG-TL) [Signature]  
CGM (ENGG-TL) [Signature]  
MGR (ENGG-TL) [Signature]  
CH. MGR (ENGG-TL) [Signature]  
ED (ENGG) [Signature]  
GM (ENGG-TL) [Signature]

14.11.17  
DATE

**DRG. NO. :- CC:ENGG:TL/HW/400 KV/TRIPLE/DT**

**TECHNICAL DETAILS:**

- 1) ALL DIMENSIONS ARE IN MM.
- 2) GENERAL TOLERANCES :  $\pm 3\%$ .
- 3) ALL FERROUS PARTS HOT DIP GALVANISED & SPRING WASHER ELECTRO GALVANISED AS PER POWERGRID SPECIFICATION.
- 4) ALL DIMENSIONS ARE AFTER GALVANISATION EXCEPT DRILLED HOLES.
- 5) HARDWARE TOLERANCES ON LENGTH  $\pm 2\%$ .



**POWER GRID CORPORATION  
OF INDIA LIMITED**  
(A GOVERNMENT OF INDIA ENTERPRISE)



**TITLE:- 400 KV DOUBLE I SUSPENSION STRING  
FOR QUADRUPLE ACSR MOOSE CONDUCTOR.  
UTS-240 KN**

**CLEARED BY**

*[Signature]*  
SR. GM  
(ENGG-TL)

*[Signature]*  
CGM  
(ENGG-TL)

*[Signature]*  
ED  
(ENGG)

*[Signature]*  
MGR.  
(ENGG-TL)

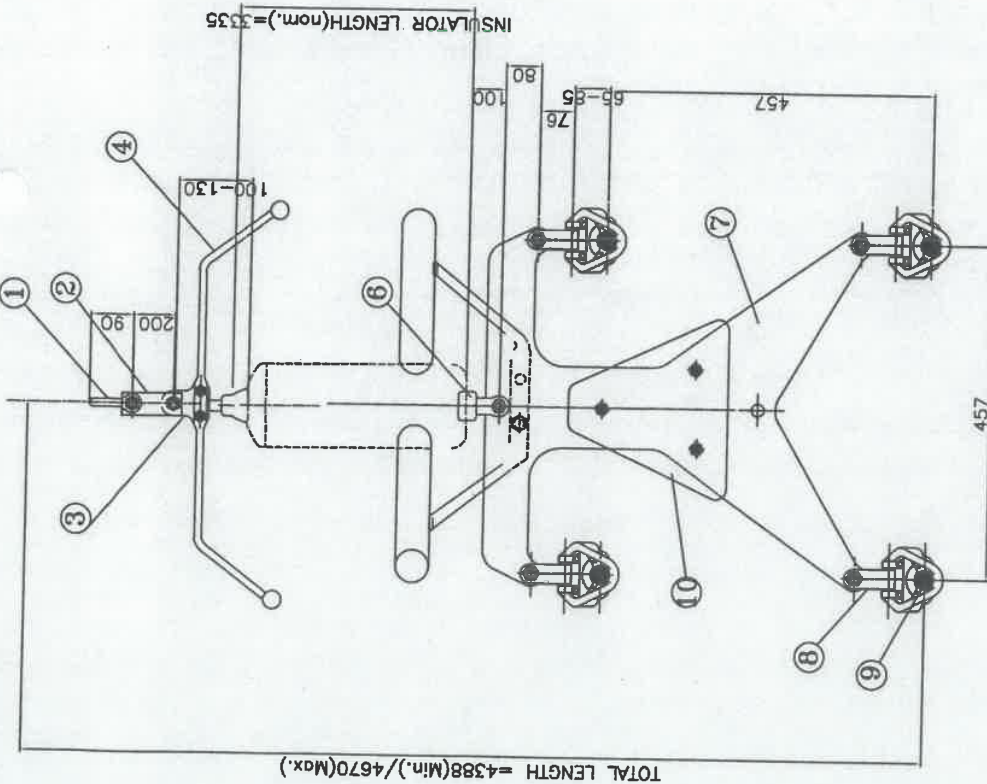
*[Signature]*  
CH. MGR.  
(ENGG-TL)

*[Signature]*  
GM  
(ENGG-TL)

14/11/19  
DATE

**DRG. NO.:- CC:ENGG:TL/HW/400 KV/QUAD/DIS**

Sr. No.	DESCRIPTION	PART NO.	UTS	QTY.	REF
10	SUSPENSION CLAMP(AGS)	AGS-MOUSE	70 KN	4	AGS-001
9	CLEVIS EYE	CE-90-01	90 KN	4	CE-001
8	CORONA RING	CR-400-02	----	1	CR-001
7	YOKE PLATE	YP-C-Q-240-01	240 KN	1	YP-C-Q-001
6	SOCKET CLEVIS	SC-120-01	120 KN	2	SC-001
5	BALL CLEVIS	BC-120-01	120 KN	2	BC-001
4	ARCING HORN (BALL)	AH-BL-02B	----	2	AHB-001
3	YOKE PLATE	YP-TR-240-02A	240 KN	1	YP-TR-001
2	Y-STRAP	YS-240-01	240 KN	1	YS-001
1	ANCHOR SHACKLE	AS-240-01	240 KN	1	AS-001
	DESCRIPTION	PART NO.	UTS	QTY.	REF
					DRG:CC:ENGG:TL/HW



**TECHNICAL DETAILS:**

- 1) ALL DIMENSIONS ARE IN mm.
- 2) GENERAL TOLERANCES :  $\pm 3\%$ .
- 3) ALL FERROUS PARTS HOT DIP GALVANISED & SPRING WASHER ELECTRO GALVANISED AS PER POWERGRID SPECIFICATION.
- 4) ALL DIMENSIONS ARE AFTER GALVANISATION EXCEPT DRILLED HOLES.
- 5) HARDWARE TOLERANCES ON LENGTH  $\pm 2\%$ .

**POWER GRID CORPORATION  
OF INDIA LIMITED**  
(A GOVERNMENT OF INDIA ENTERPRISE)



**TITLE:- 400 KV SINGLE I SUSPENSION PILOT STRING  
SUITABLE FOR QUADRUPLA ACSR MOOSE CONDUCTOR.**

UTS-120 KN

**CLEARED BY**

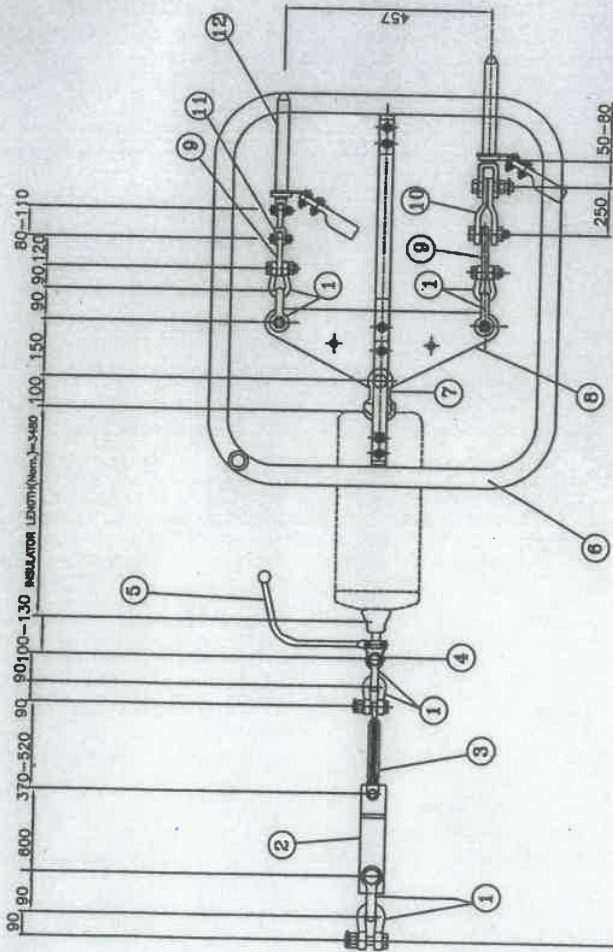
SR. CM (ENGG-TL)	CGM (ENGG-TL)	ED (ENGG)
14.11.19	21.02.19	
DATE	MGR. (ENGG-TL)	CH. MGR (ENGG-TL)

**DRG. NO.:- CC:ENGG:TL/HW/400 KV/QUAD/SISP**

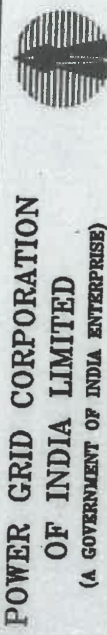
Sr. No.	DESCRIPTION	PART NO.	UTS	QTY.	REF
10	COUNTER WEIGHT ASSEMBLY	CW-01	----	1	SET
9	SUSPENSION CLAMP	ENV-MDOSE	70 KN	4	ENV-001
8	CLEVIS EYE	CE-90-01	90 KN	4	CE-001
7	YOKE PLATE	YP-C-Q-120-02	120 KN	1	YP-C-Q-001
6	SOCKET CLEVIS	SC-120-01	120 KN	1	SC-001
5	CORONA RING	CR-400-01	----	1	CR-001
4	ARCING HORN (BALL)	AH-BL-01B	----	1	AHB-001
3	BALL EYE (HORN HOLDER)	BE-120-01	120 KN	1	BE-001
2	Y-STRAP	YS-120-01	120 KN	1	YS-001
1	ANCHOR SHACKLE	AS-120-01	120 KN	1	AS-001
	DESCRIPTION	PART NO.	UTS	QTY.	REF

**TECHNICAL DETAILS:**

- 1) ALL DIMENSIONS ARE IN MM.
- 2) GENERAL TOLERANCES : ±3%
- 3) ALL FERROUS PARTS HOT DIP GALVANISED & SPRING WASHER ELECTRO GALVANISED AS PER POWERGRID SPECIFICATION.
- 4) ALL DIMENSIONS ARE AFTER GALVANISATION EXCEPT DRILLED HOLES.
- 5) HARDWARE TOLERANCES ON LENGTH ±2%.
- 6) CLEVIS EYE NOT REQUIRED IF DEAD END ASSEMBLY INCLUDES ANCHOR SHACKLE



TOTAL LENGTH = 5873(Min.) / 6412(Max.)



**POWER GRID CORPORATION OF INDIA LIMITED**  
(A GOVERNMENT OF INDIA ENTERPRISE)

**TITLE:- 400 KV. SINGLE TENSION STRING SUITABLE FOR QUADRUPLE ACSR MOOSE CONDUCTOR. UTS-120 KN**

**CLEARED BY**

<i>[Signature]</i> SR. GM (ENGG-TL)	<i>[Signature]</i> CGM (ENGG-TL)	<i>[Signature]</i> ED (ENGG)
14.11.19	21/11/19	<i>[Signature]</i> CH. MGR (ENGG-TL)
DATE	MGR. (ENGG-TL)	GM (ENGG-TL)

**DRG. NO. :- CC:ENGG:TL/HW/400 KV/QUAD/ST**

Sr. No.	DESCRIPTION	PART NO.	UTS	QTY.	REF
13	SPACER (250 mm)	RS-250-MD05E	----	1	RS-001
12	COMPRESSION DEADEND	CDE-MD05E	----	4	CDE-002
11	CLEVIS EYE	CE-160-01	160 KN.	2	CE-001
10	Y-STRAP	YS-160-02	160 KN.	2	YS-001
9	YOKE PLATE	YP-TR-80-01	80 KN.	2	YP-TR-001
8	YOKE PLATE	YP-TR-120-06	120 KN	1	YP-TR-001
7	SOCKET CLEVIS	SC-120-01	120 KN	1	SC-001
6	CORONA RING	CR-400-03C	----	2 SETS	CR-002
5	ARCING HORN (BALL)	AH-BL-03B	----	1	AHB-001
4	BALL EYE (HORN HOLDER)	BE-120-01	120 KN	1	BE-001
3	TURN BUCKLE	TB-120-01	120 KN	1	TB-001
2	Y-STRAP	YS-120-02	120 KN	1	YS-001
1	ANCHOR SHACKLE	AS-120-01	120 KN	8	AS-001
	DESCRIPTION	PART NO.	UTS	QTY.	REF

DRG:CC:ENGG:TL/HW

